



HSG Labs | Optimizer



Increase patron satisfaction and loyalty by delivering consistently best quality from the equipment!

Immediate problem identification thanks to the automated capability and immediate reporting.

Designed specifically for commercial cinema environments, the HSG Labs Optimizer allows to automatically report screen parameters as well as maintain and ensure quality across entire circuits.

With the matured experience on HSG Labs Ultimate and HSG Labs Spectro widely used by the industry we have designed a tool that helps to keep the best quality at every show.

Key Functions

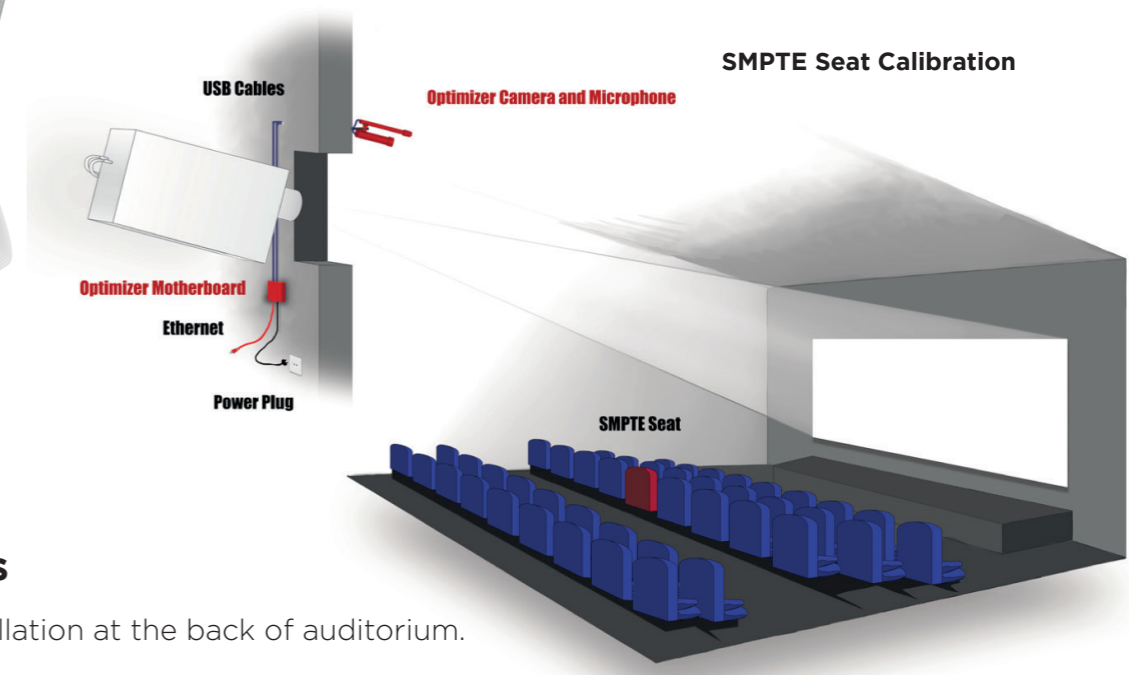
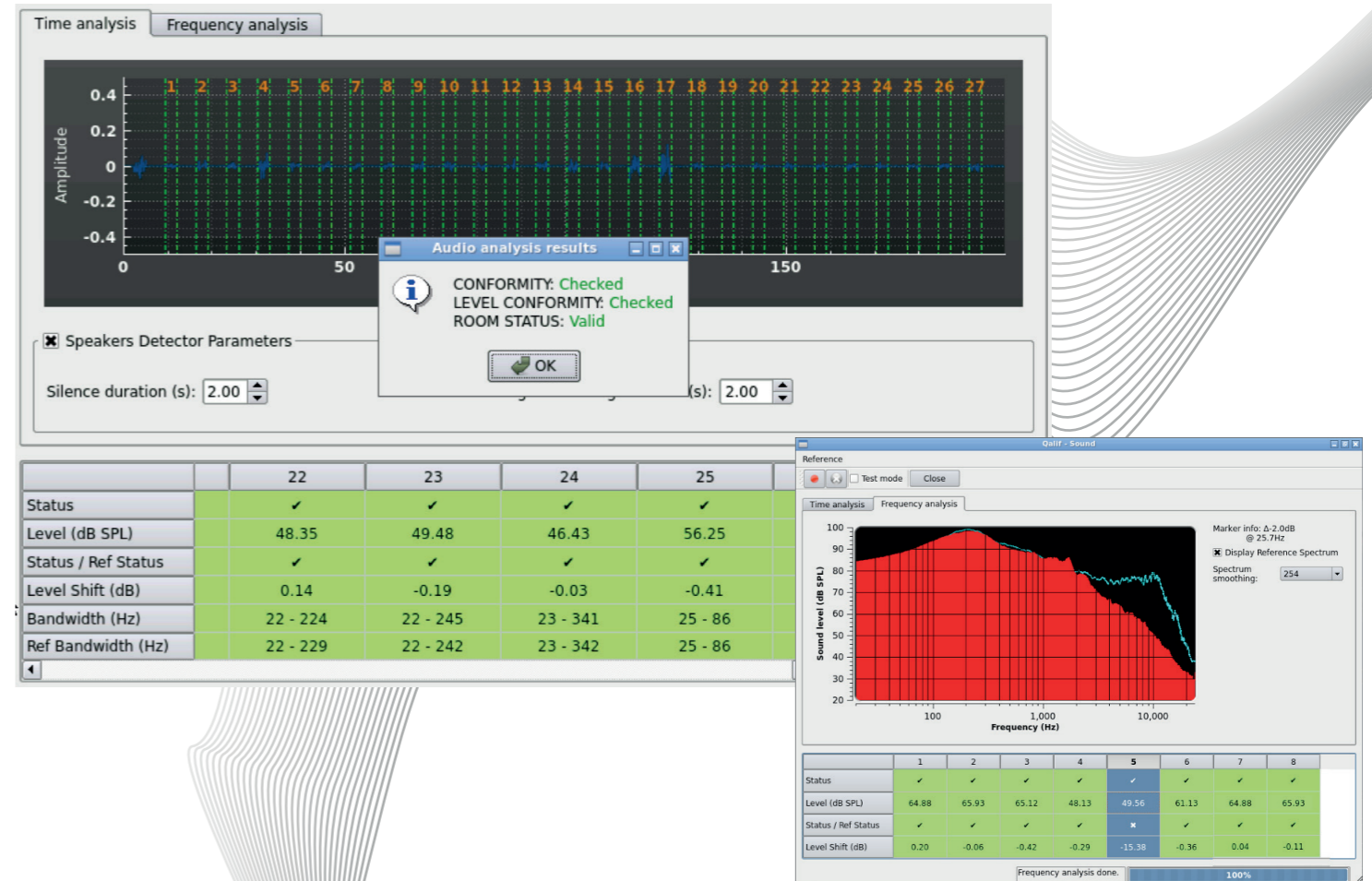
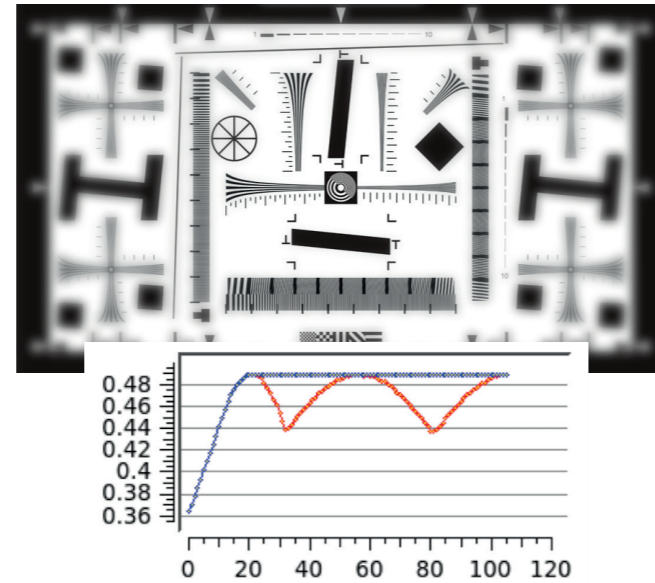
- Full screen luminance measurement and long-term history (for tracking projector or laser aging) with 144 points, 9 or 5 points.
- Lens focus automatic adjustment to the best point.
- Audio validity check for 6 ch, 8 ch and Dolby Atmos™.

Luminance values (144 measurement points): fl

Qalif (144 points)

7.6	8.6	9.7	10.6	11.3	11.5	11.4	11.0	10.5	9.9	9.3	8.7	8.1	7.4	6.7	6.0
8.0	9.2	10.3	11.3	12.0	12.2	12.1	11.7	11.1	10.4	9.7	9.1	8.4	7.7	6.9	6.2
8.3	9.5	10.8	11.9	12.6	12.9	12.8	12.3	11.7	10.9	10.1	9.4	8.7	7.9	7.1	6.3
8.6	9.9	11.2	12.4	13.3	13.6	13.4	12.9	12.2	11.4	10.5	9.7	8.9	8.1	7.3	6.4
8.7	10.1	11.5	12.8	13.8	14.2	14.0	13.5	12.6	11.7	10.8	9.9	9.1	8.2	7.4	6.5
8.8	10.2	11.7	13.0	14.0	14.5	14.5	14.0	13.0	11.9	11.0	10.1	9.2	8.3	7.4	6.5
8.8	10.1	11.7	13.1	14.2	14.8	14.8	14.2	13.2	12.1	11.1	10.2	9.2	8.2	7.3	6.4
8.6	10.2	11.6	13.0	14.1	14.9	14.9	14.3	13.3	12.2	11.1	10.2	9.2	8.2	7.2	6.3
8.4	9.9	11.3	12.6	13.8	14.5	14.7	14.0	13.1	12.0	11.0	10.0	9.0	8.0	7.1	6.2

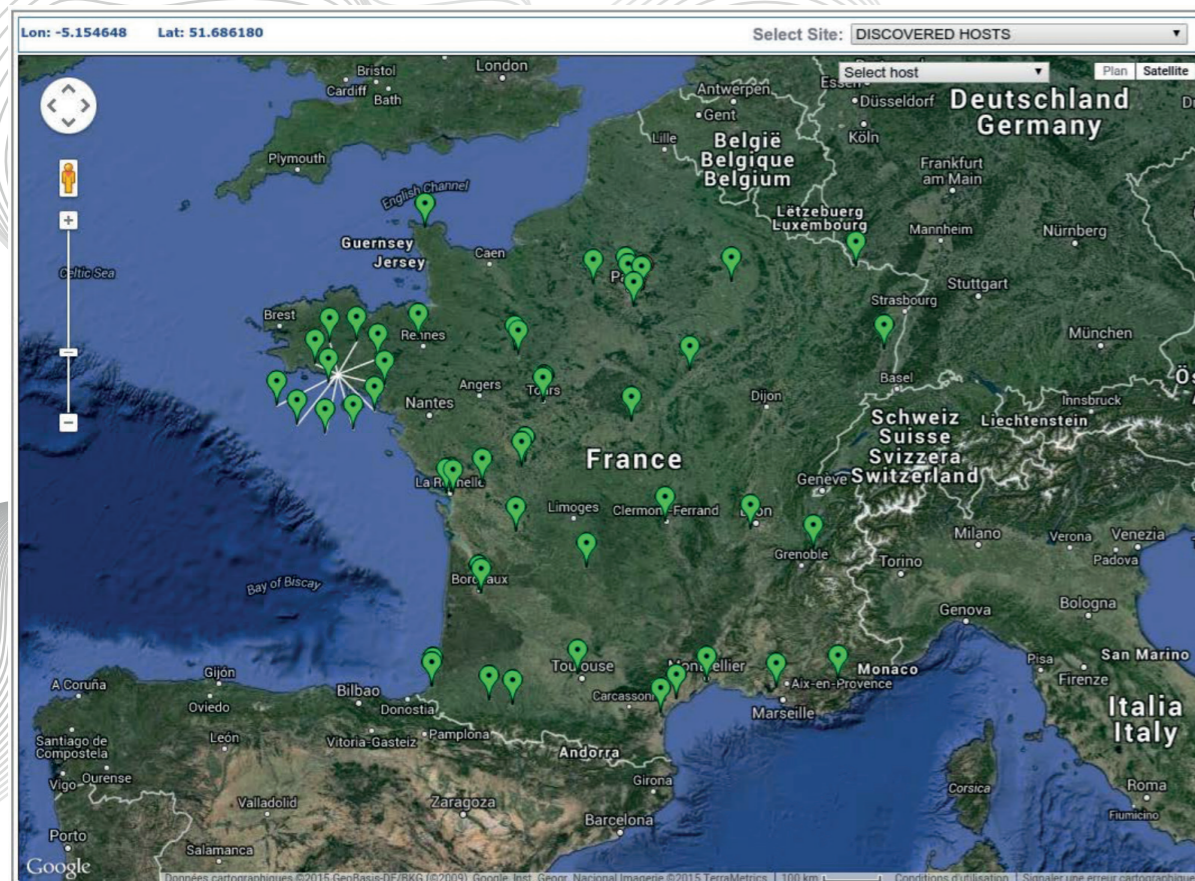
Delta X (% half-screen width): -20.0
 Delta Y (% half-screen height): -75.0
 Uniformity average % (144 points): 71
 Center luminance: 13.1 fl



Benefits & Details

- Permanent fixed installation at the back of auditorium.
- Automation via server playlist and macros.
- Configurable tolerances :
 - Centralized reports (SNMP, API or Zabbix Agent) or integration with your preferred TMS like Cielo Cinema TMS, Christie Cinergy*
 - Onsite calibration capable (No need to be uninstalled every year for calibration)
- RGB, Laser Phosphor, and Xenon projection compatible

*Other TMS and NOC system are under integration, enquiry us for the latest integrations.



Specifications

Throw Ratio	Minimum of 1.25/1 (shorter on demand)
Luminance accuracy	± 2%
Repeatability	1 %
Size - Weight	L72 x H48 x W134mm - 200g
Control compatibility	HTML and VNC capability or API
Interface	Ethernet (in projection booth)

Camera

Imaging/pixel array	1280 x 960 pixels
CCD	Monochrome 4.8 x 3.6 mm
Total pixels	1.2M
Shutter	Electronic
Size - Weight	L39 x H39 x W74 mm 200g

Microphone

Microphone body	Die cast aluminium
Frequency response	20Hz - 20kHz +/-1 dB
Repeatability	24bit ADC @44.1 or 48kHz
Size - Weight	133 dB SPL @0dB gain setting
Control compatibility	L20 x H20 x W189 mm - 100g