



hsg labs® | checker

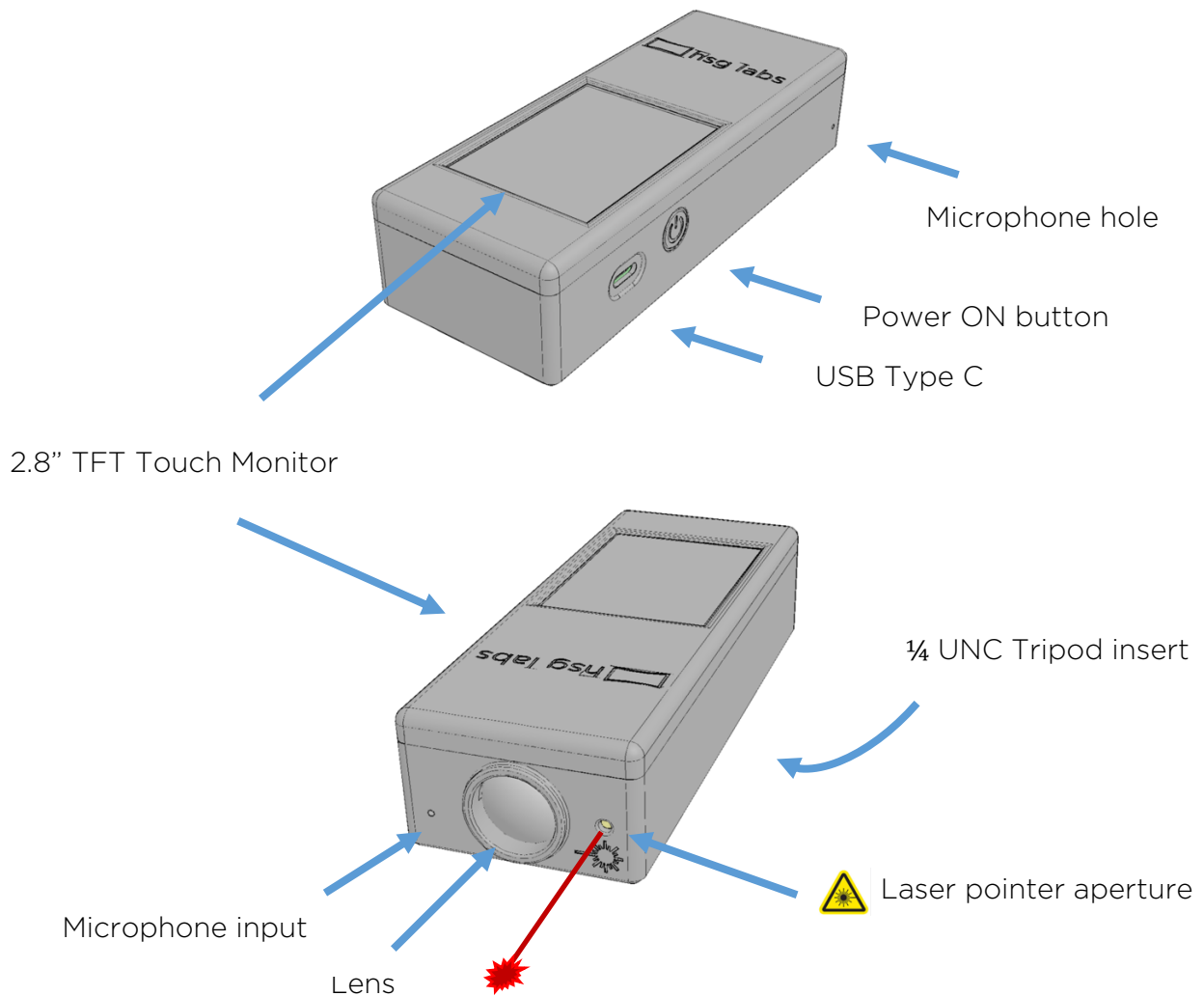
QUICK START GUIDE

Manufacturer



151 voie H Impasse des Bruyères
06370 Mouans-Sartoux
France
VAT FR69 948058813

Product details



Specifications

Packed size (mm)	200.3 x 142.4 x 48
Packed Weight (g)	463
Device size (mm)	147 x 56 x 33.5
Device Weight (g)	170
Display	2.8 inch TFT LCD resistive touch screen
Resolution	320 x 240(RGB) – 65k colour LED Backlight
Battery	Li-ion 1800 mAh/3.7V (non-removable)
Battery life	up to 5 hours
Input power	DC 5 V, 1A, USB Type C socket
Laser pointer	Class 3R, 5mW, 650nm (red)

Working Conditions

Always transport in the carry case

For indoor usage only

Operating temperature non-condensing 5 °C to 35 °C (41 °F to 95 °F)

Light Sensor

Measuring aperture	2.5° (FOV)
Spectral response	400nm to 725nm
Luminance range	0.0 – 40fL (0 – 137 cd/m ²)
Luminance accuracy	± 1 fL (A Illuminant)

Audio Sensor

Spectral response	40 Hz to 20 kHz
dBc Accuracy	1.5dB (at 1kHz)
Spectrum visualization	10 bands (average time ± 6 seconds)

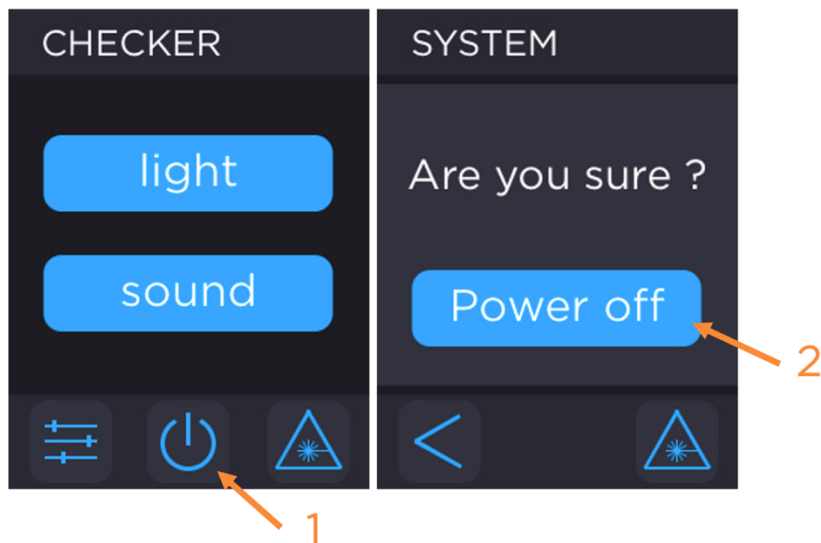
Product Code



Item Name/Number	HSG-CHK-AV1
UPC Code	checker
Display Name/Code	HSG Labs Checker
HS Code	90275000

Basic operations

To **power on** the unit, press the power button, located on the side of the device.

The **power off** is only possible via the touch screen by clicking the power off icon located at the bottom center of the main page.



To **charge** the device connect to a power source with an USB Type C cable, the device will charge and will stay powered on until the power is removed. The charging icon  is displayed until the fully charged .

Contacts

HSG Labs provides users with support services for questions or problems related to the use of the equipment:

support@hsg-labs.com

Website

<https://hsg-labs.com>

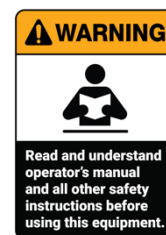
Manual Download



Safety, environmental and Regulatory Information


Safety Notice

Read and follow this important safety information relative to HSG Labs Checker. Failure to do so, or use of controls, adjustments, procedures, connections, or signal types other than those specified in this documentation, can result in personal injury or death, and damage to the equipment.



Safety Legend

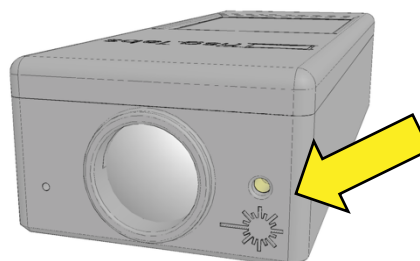
 **NOTE:** A NOTE indicates important information that helps to make better usage of the HSG Labs Checker

 **CAUTION:** A CAUTION indicates potential damage to hardware or loss of data if instructions are not followed.


 **WARNING:** A WARNING indicates a potential for property damage, personal injury, or death.

Laser Pointer

The HSG Labs Checker uses a laser pointer to target the zone to be measured. The laser emitting point is indicated by a sticker applied on the unit. The laser output is indicated by a laser beam at the front of the device, near the lens.



As such, all precautions relative to laser device use must be respected.

 **WARNING:** Do not stare directly at the laser beam and do not point the laser into someone else eyes.

Laser Specifications:

- *Class: Class 3R*
- *Power: 5mW*
- *Wavelength: 650nm (red)*

General Safety

 **WARNING:** OBSERVE THE FOLLOWING INSTRUCTIONS TO HELP PREVENT POTENTIAL FOR PROPERTY DAMAGE, PERSONAL INJURY, OR DEATH:

- *Do not operate the equipment with any cover(s) removed.*
- *Do not use damaged equipment, including exposed, frayed, or damaged power cords.*
- *Do not use the equipment where it can get wet. Protect equipment from liquid intrusion. If the equipment gets wet, turn it off and disconnect power to the equipment and to any attached devices. Contact an experienced electrical technician for further help.*
- *Do not push any objects into the air vents or openings of the equipment. Doing so can cause fire or electric shock.*

 **CAUTION:** OBSERVE THE FOLLOWING INSTRUCTIONS TO HELP PREVENT DAMAGE TO HARDWARE OR LOSS OF DATA:

- *Do not attempt to service the equipment yourself.*
- *If the power supply has a voltage selection switch, be sure to set it for the voltage that most closely matches the AC power available at your location.*
- *Operate the equipment only from the type of external power source indicated on the electrical ratings label.*
- *To avoid possible damage to the system board, wait 30 seconds after turning off the equipment before removing a component from the system board or disconnecting a peripheral device from the equipment.*
- *Ensure that nothing rests on the equipment's cables.*
- *Move equipment with care. Avoid sudden stop and uneven surface.*
- *Keep the unit away from radiators and heat sources.*
- *Keep the equipment away from extremely hot or cold temperatures to ensure that it is used within the specified operating range.*
- *Use only approved power cable(s) rated for the equipment. The voltage and current rating of the cable should be greater than the ratings marked on the equipment.*
- *Observe extension cable and power strip ratings. Ensure that the total ampere rating of all equipment plugged into the extension cable or power strip does not exceed 80 percent of the ampere ratings limit for the extension cable or power strip.*
- *To help protect the equipment from fluctuations in electrical power, use a surge suppressor, line conditioner, or uninterruptible power supply (UPS).*
- *Do not spill food or liquids on your equipment.*
- *Before cleaning the equipment, disconnect it from the electrical outlet. Clean the unit with a soft cloth. Do not use liquids or aerosol cleaners, which may contain flammable substances.*
- *If the equipment does not operate normally - in particular, if there are any unusual sounds or smells coming from it - unplug it immediately and contact an authorized dealer or service center.*


Ergonomic Instructions

Prolonged use of a HSG Labs Checker can lead to frequent muscle aches and nerve pain if not done correctly unless a few guidelines are followed.

- *The wrists should be in a neutral or straight position when holding the unit or the stylus.*

 **CAUTION:** Improper or prolonged stylus use may result in injury

- *Take breaks. These breaks can be brief and should include stretches for optimal results.*
- *Rest your eyes by refocusing on distant objects intermittently when working.*

 **CAUTION:** Viewing a display or external monitor screen for extended periods of time may result in eye strain.

Wireless Safety

The HSG Labs Checker is provided with an embedded Bluetooth Low Energy (BLE) chip and antenna.

Regulatory Information:

HSG Labs is not responsible for any radio or television interference caused by unauthorized modification of the Wireless devices, or the substitution or attachment of connecting cables and equipment other than that installed by HSG Labs. The correction of interference caused by such unauthorized modification, substitution or attachment is the responsibility of the user. HSG Labs and its authorized resellers or distributors are not liable for any damage or violation of government regulations that may arise from the user failing to comply with these guidelines.

Disposal and Recycling Information



HSG Labs recommends that customers dispose of their unwanted equipment in an environmentally sound manner. Potential methods include reuse of parts or whole products and recycling of products, components, and/or materials.



The HSG Labs Checker unit contain a Li-ion battery composed by 1 cell with 6.7Wh (3.7V - 1800mAh).

⚠ WARNING: Do not dismantle, open or shred the battery; ingredient contained within or their ingredients products could be harmful. The battery is not dangerous with normal use.

Take-back Solution

The product can be shipped back to HSG Labs at any time for the correct disposal, ensure that on the packing there is clearly noted “end-of-life disposal”.

HSG Labs
151 voie H impasse des Bruyères
06370 MOUANS-SARTOUX
FRANCE



<http://hsg-labs.com/>

Disposable Packing

Carton/cardboard, including packing material (in grams):

Total Weight: **50g**

97/129/EC classification: **PAP20**



Plastics included in the box used for packing, wrapping or protection (in grams):

Total Weight: **0g**

Any paper included in the box, including manuals, etc. (in grams):

Total Weight: **50g**

97/129/EC classification: **PAP22**



